

Vegetative

Cytostome

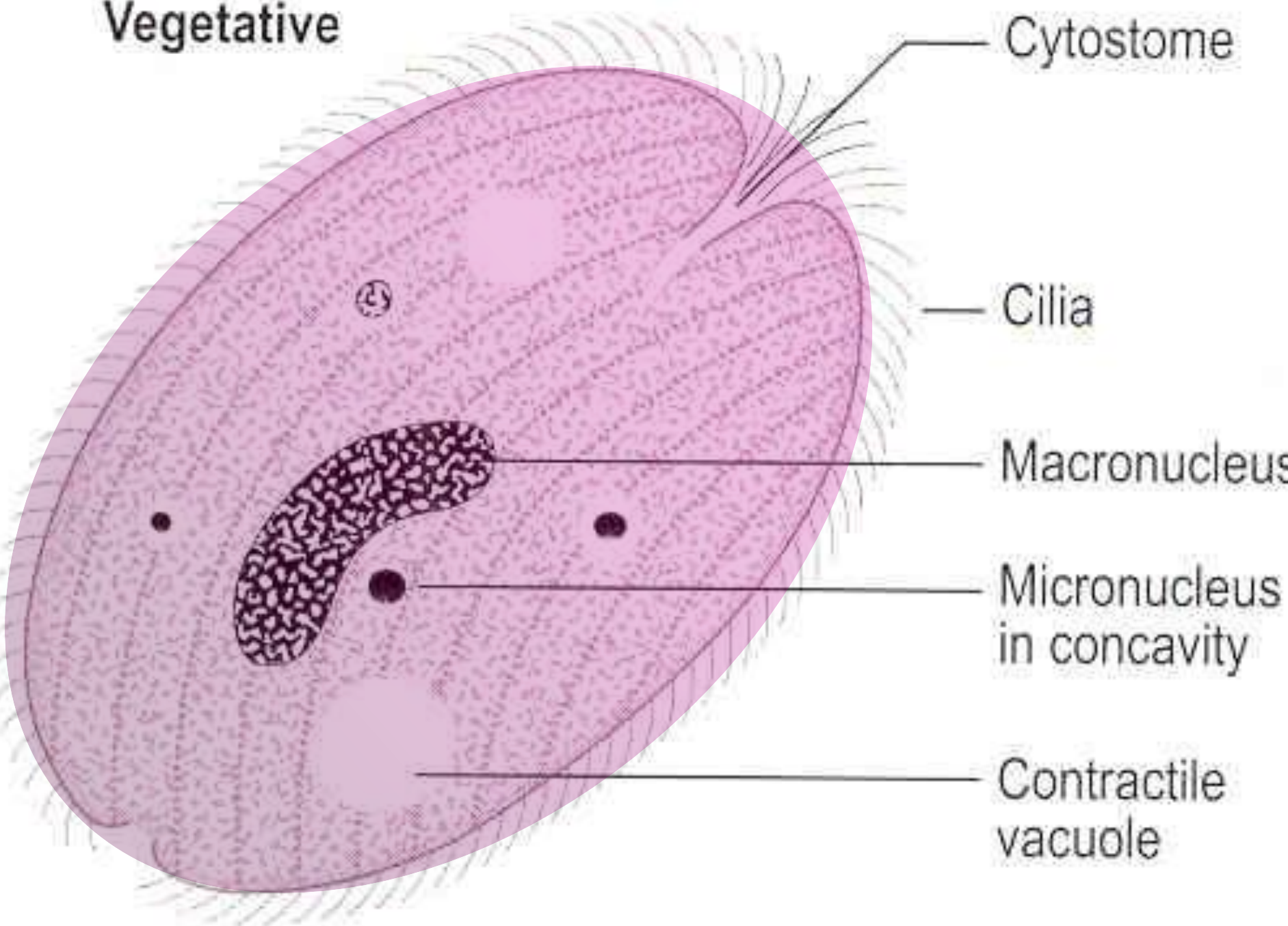
Cilia

Macronucleus

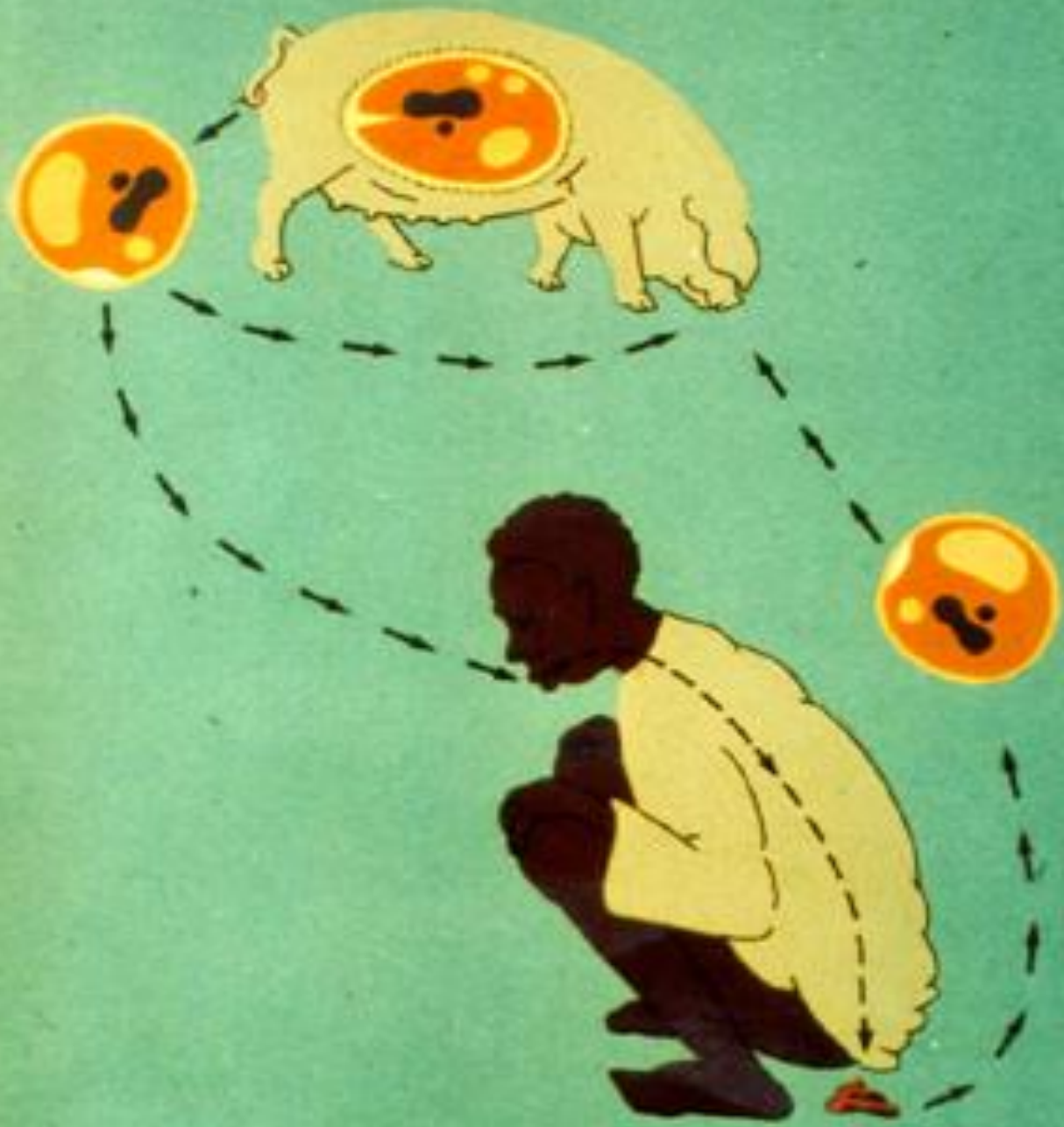
Micronucleus
in concavity

Contractile
vacuole

50-100 × 40-70 μm







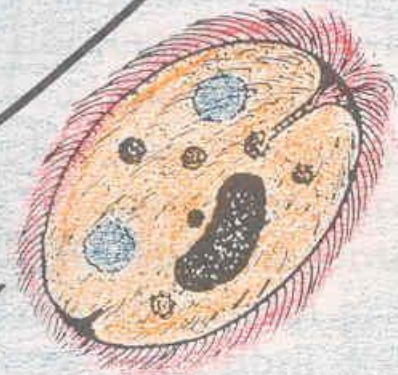
INFECTION BY
INGESTION OF CYSTS



CYST [INFECTIVE]



TROPHOZOITE
[NONINFECTIVE]

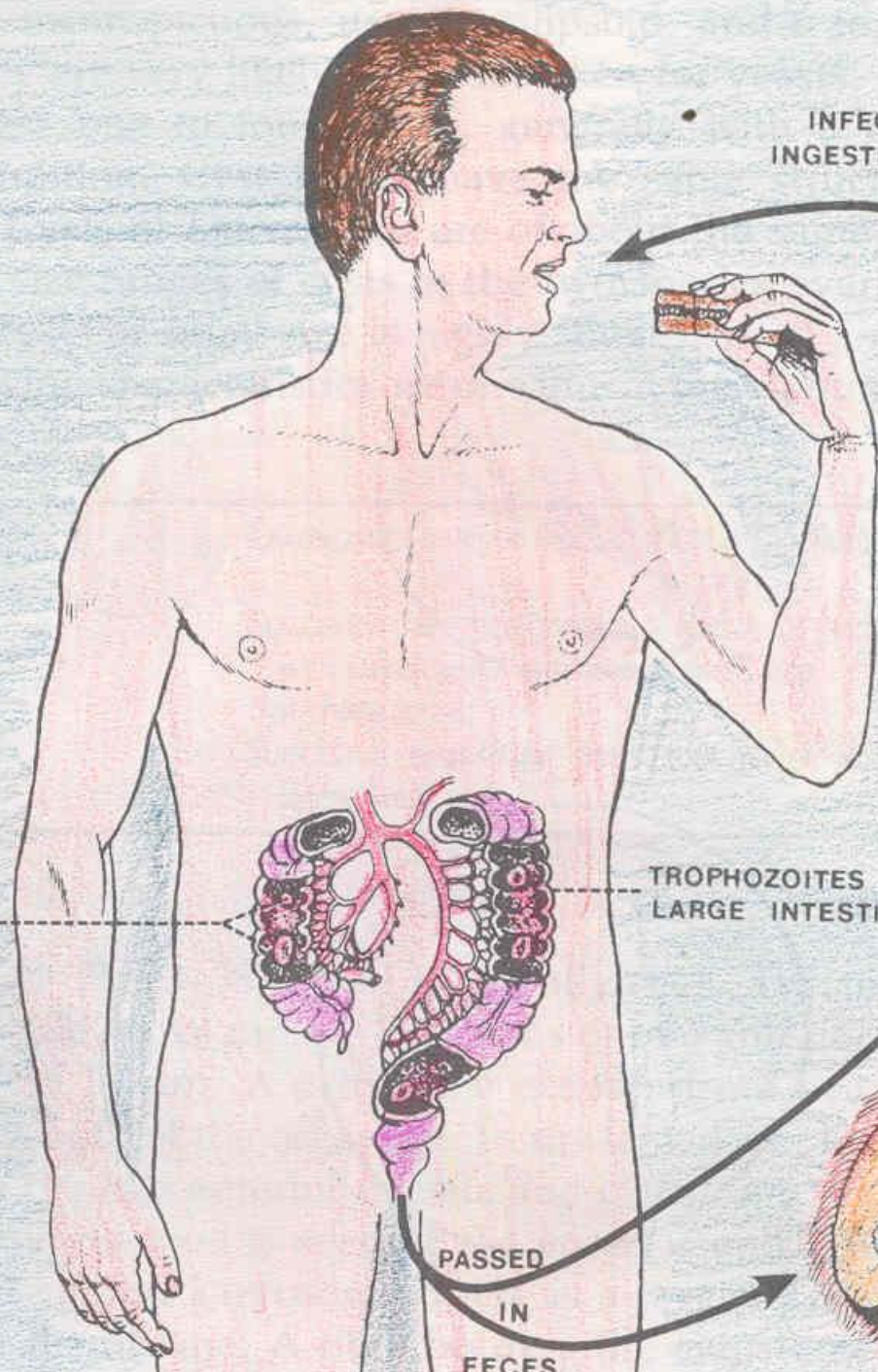


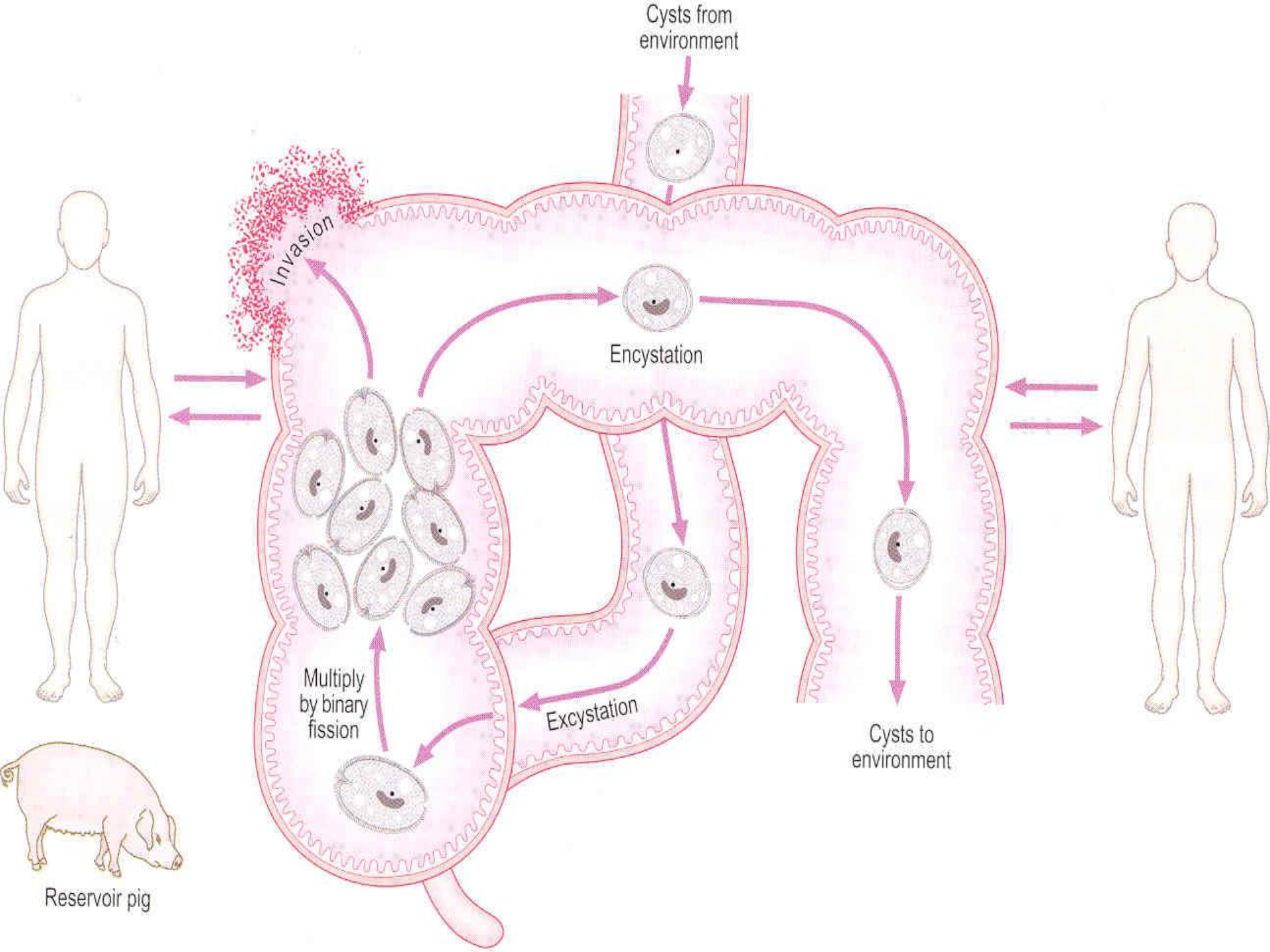
PASSED
IN
FECES

TROPHOZOITES IN
LARGE INTESTINE

TROPHOZOITES
INVADE MUCOSA
CAUSING ULCERS

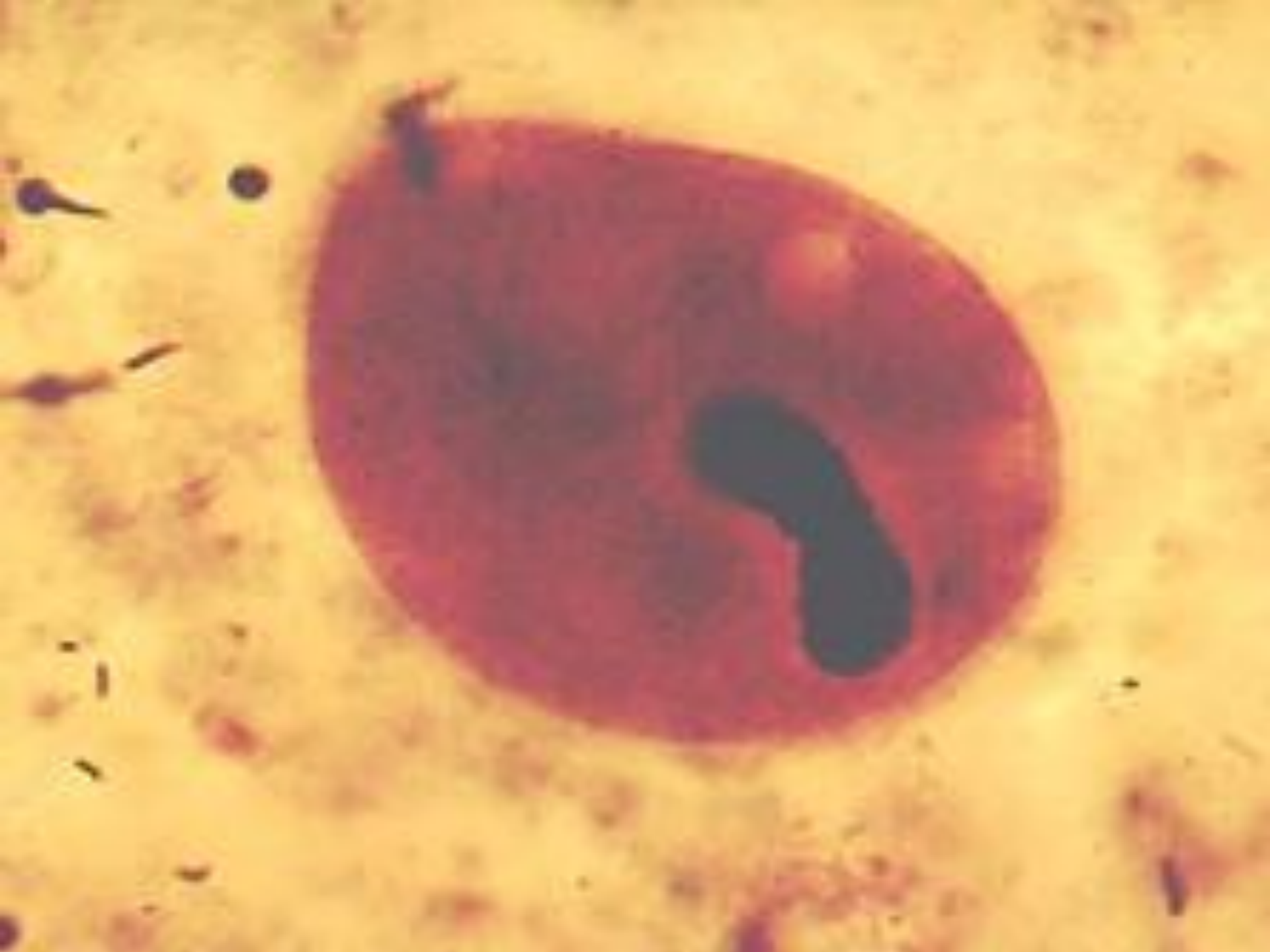
[EXTRAIESTINAL
SPREAD IS RARE]

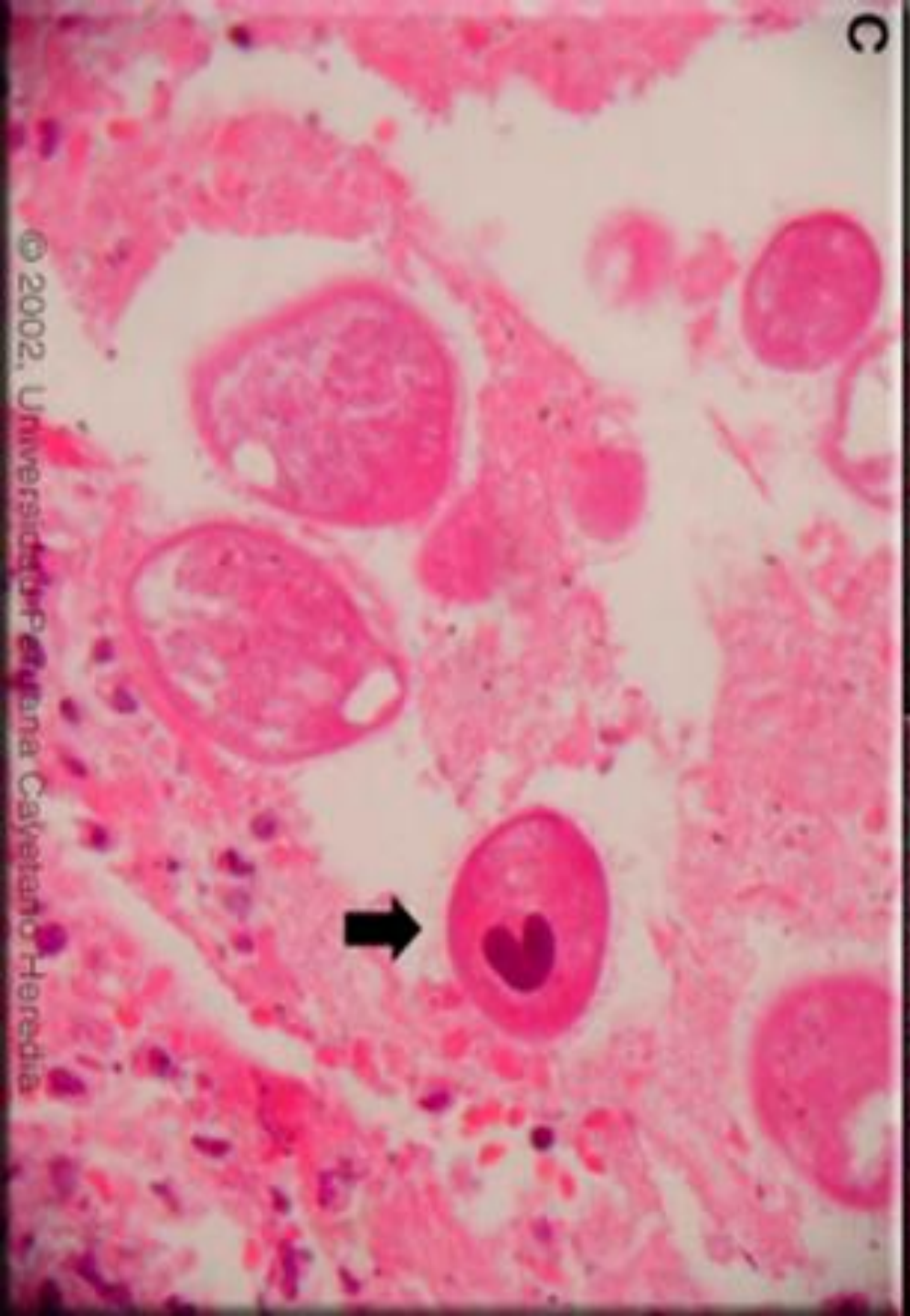
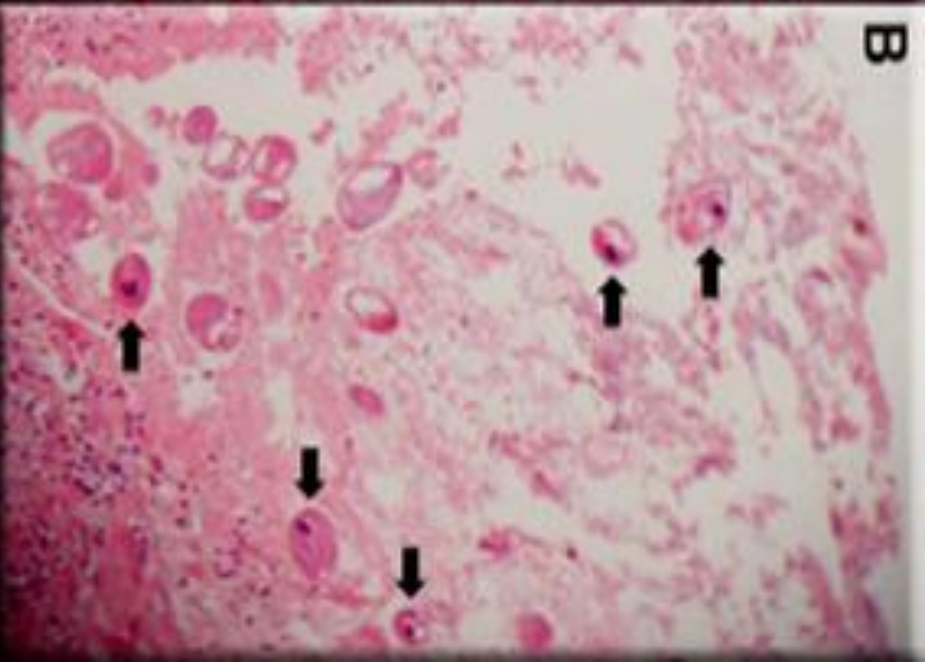
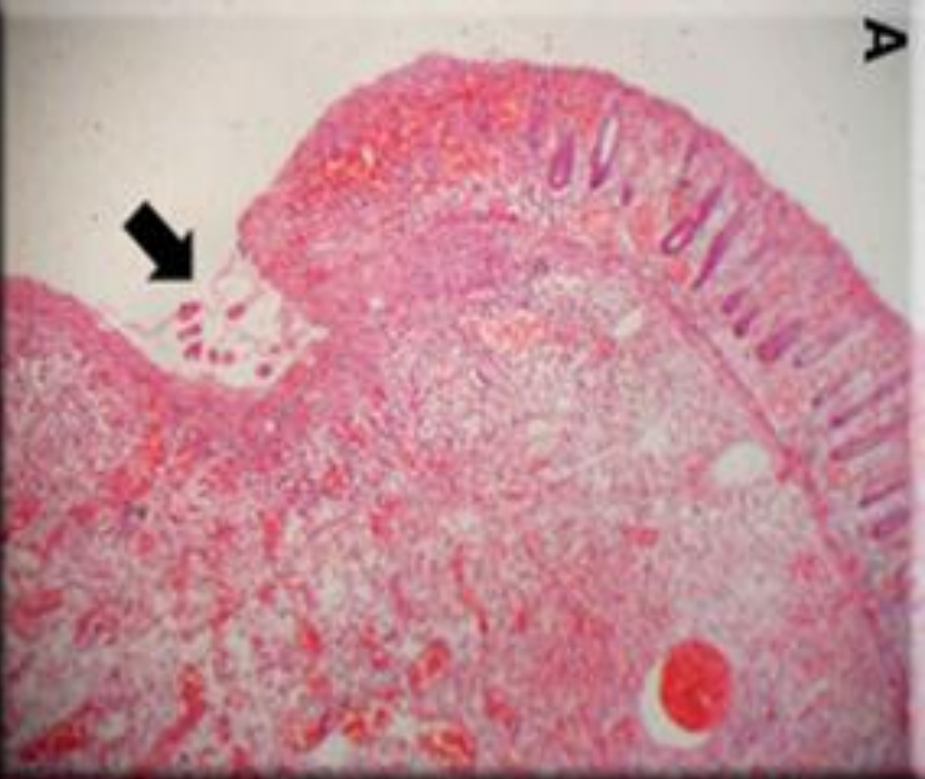










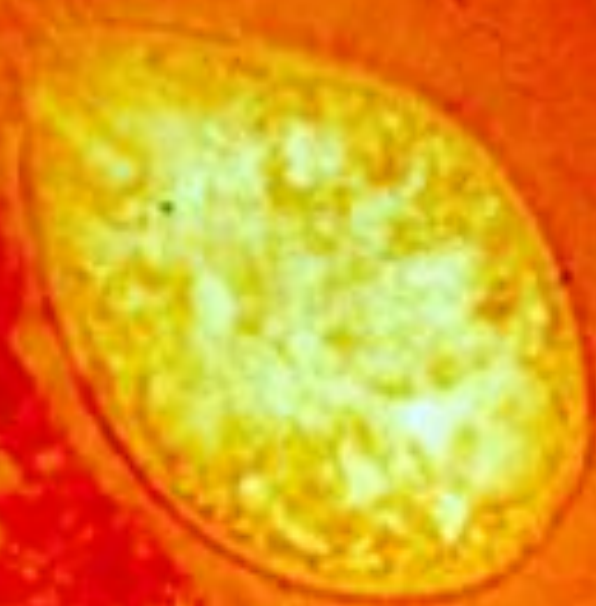


Treatment

Metronidazole

Secnidazole?

Tinidazole?



Blastocystis Hominis

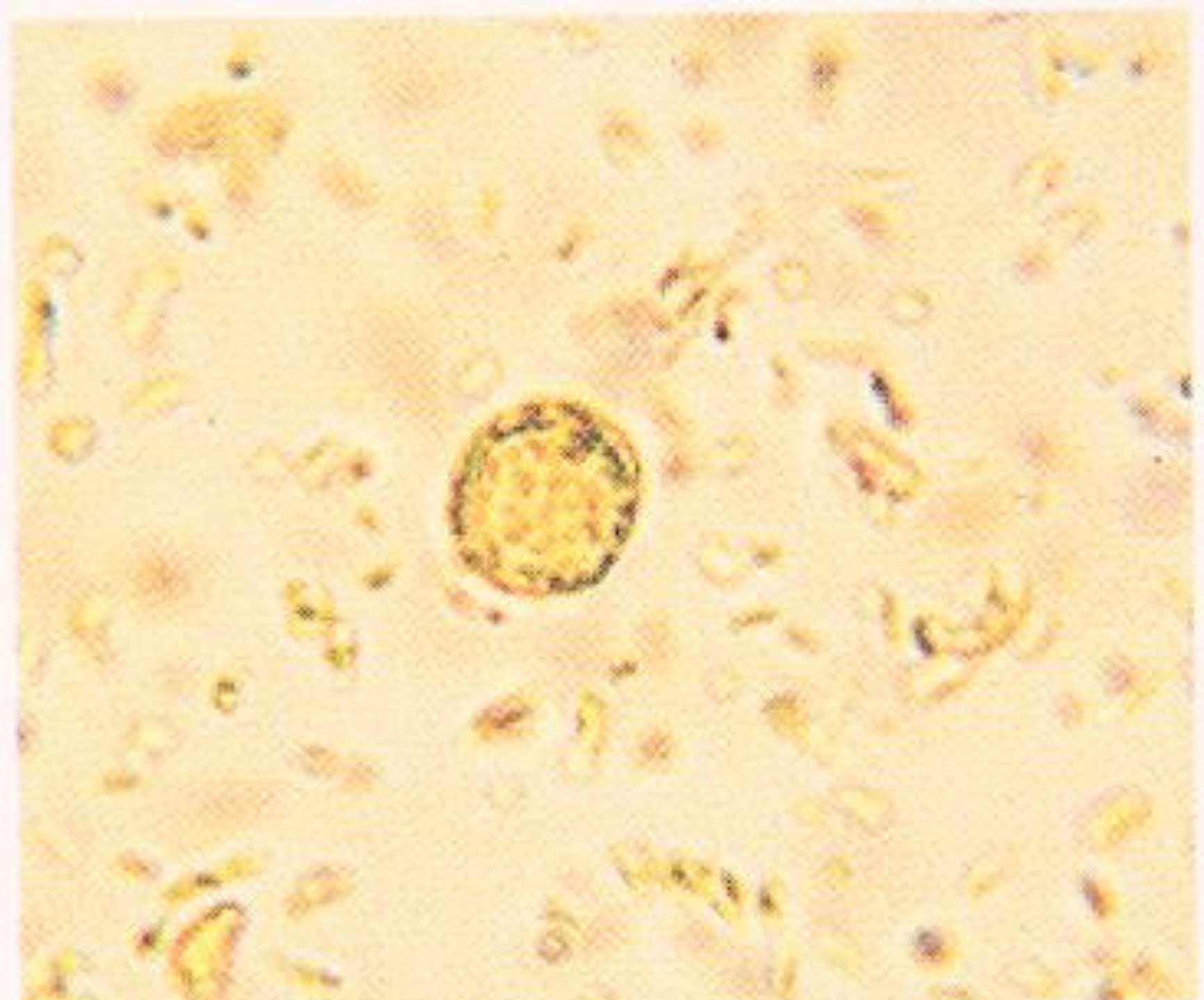
Anaerobic

Neutral pH

Bacterial dependent

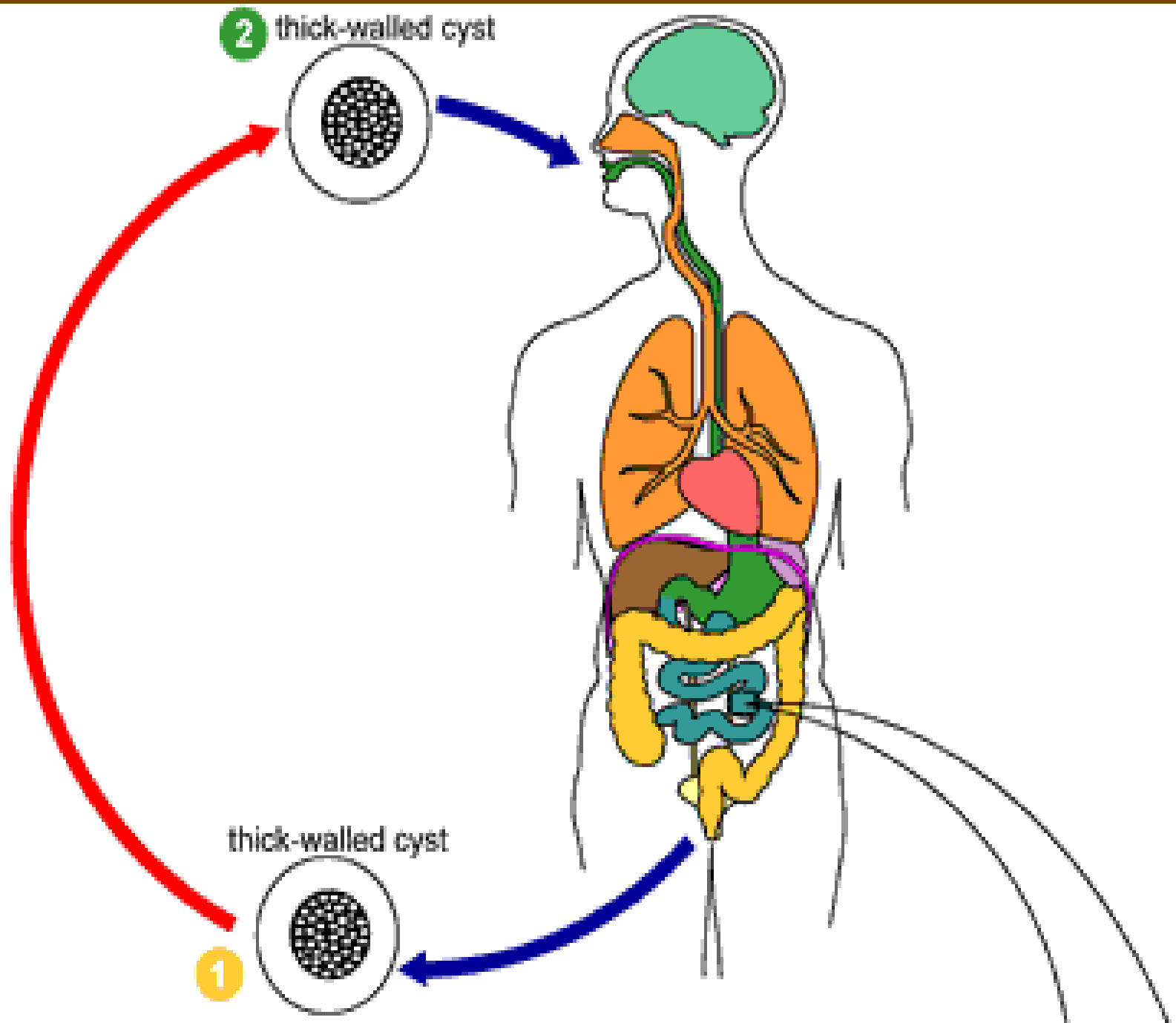
37°C







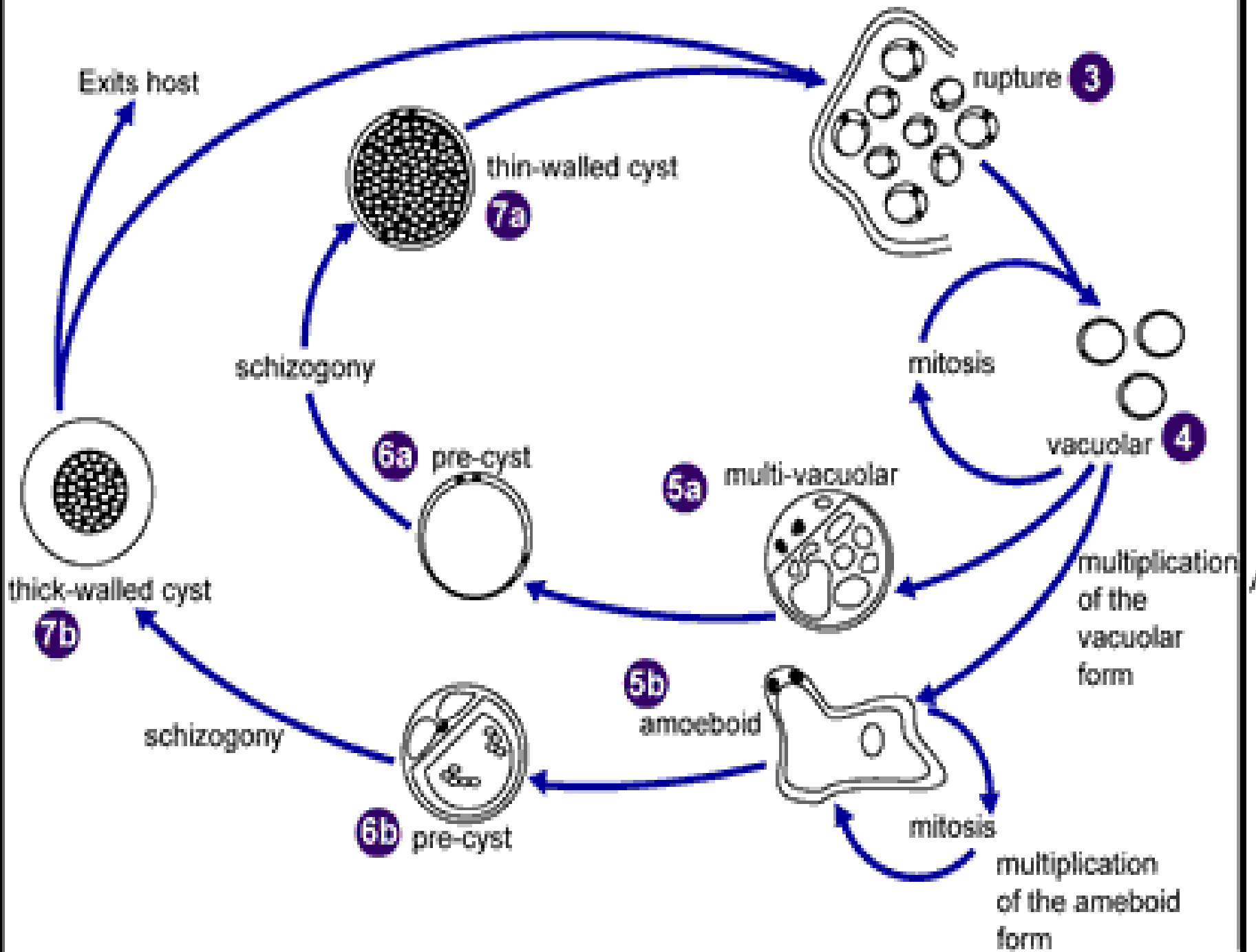
Blastocystis hominis



2 thick-walled cyst

thick-walled cyst

1



Clinical signs

- **Nausea**
- **Vomiting**
- **Abdominal pain**
- **Diarrhea**

60-70%

10µm